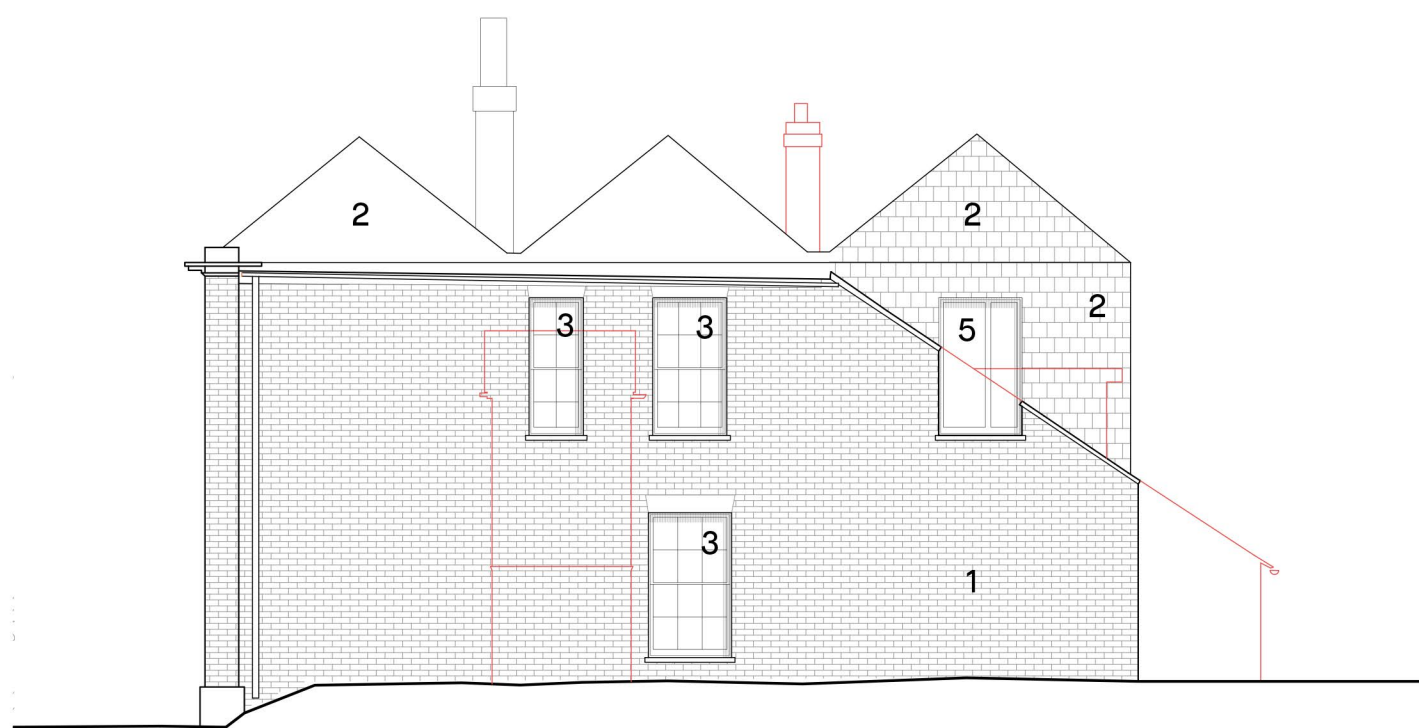


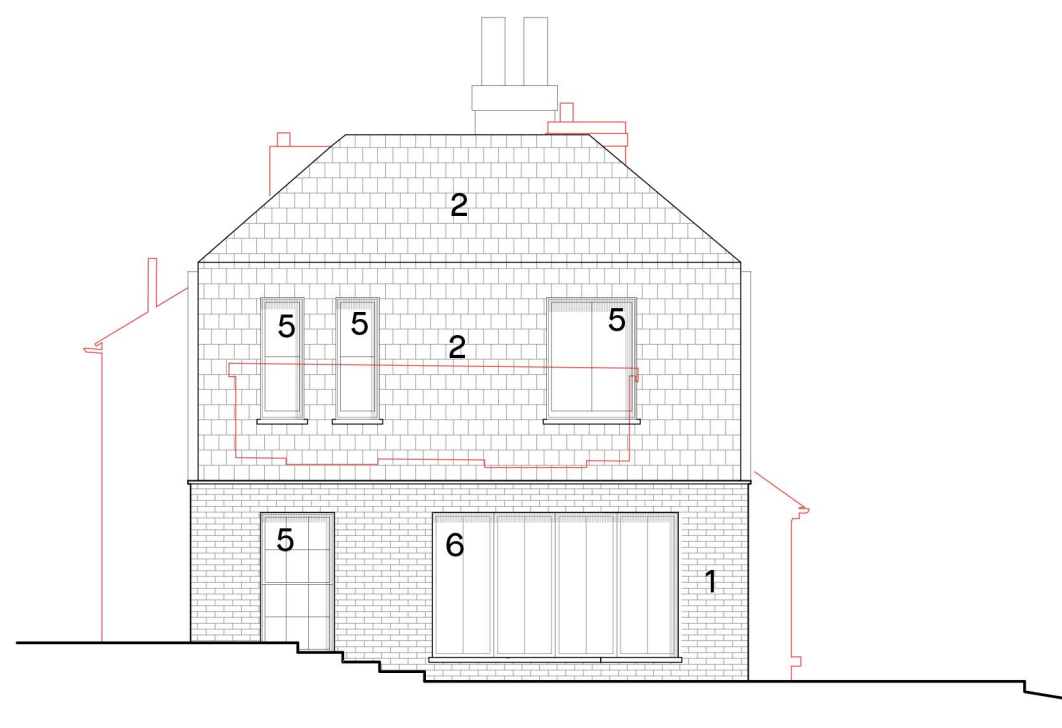
Proposed Side Elevation



Proposed Front Elevation



Proposed Side Elevation



Proposed Rear Elevation

Accommodation Schedule

Unit 1 (4b 7p)

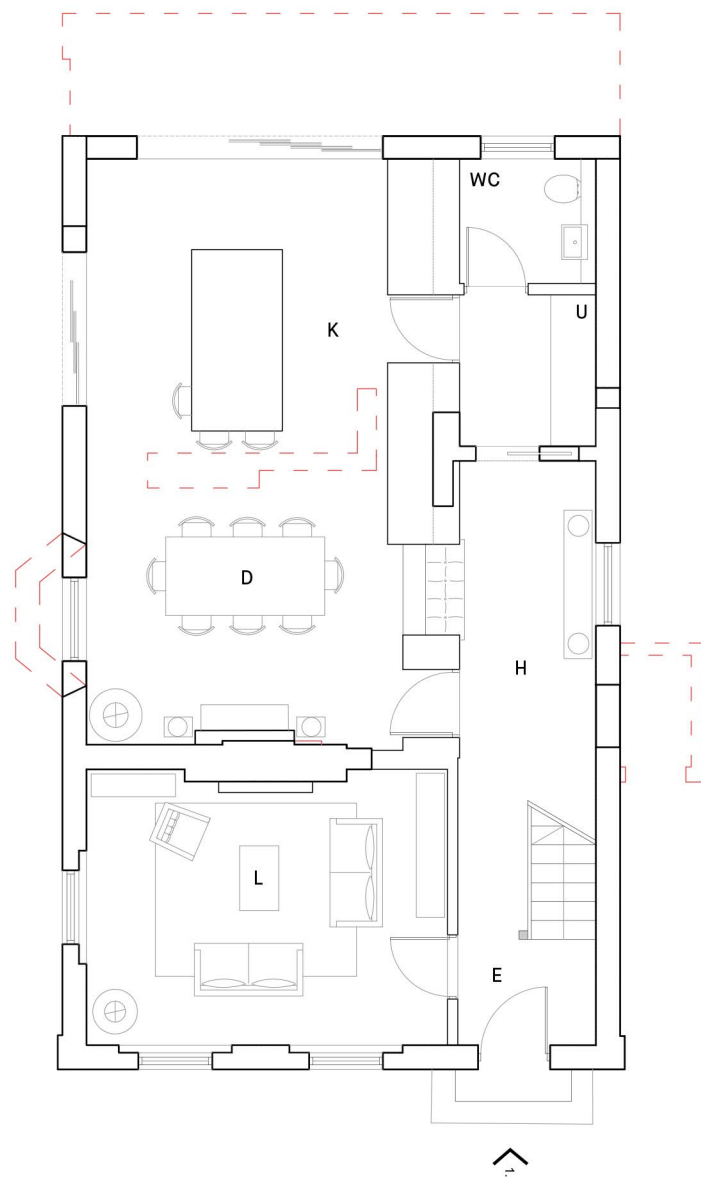
157sqm

Drawing Key

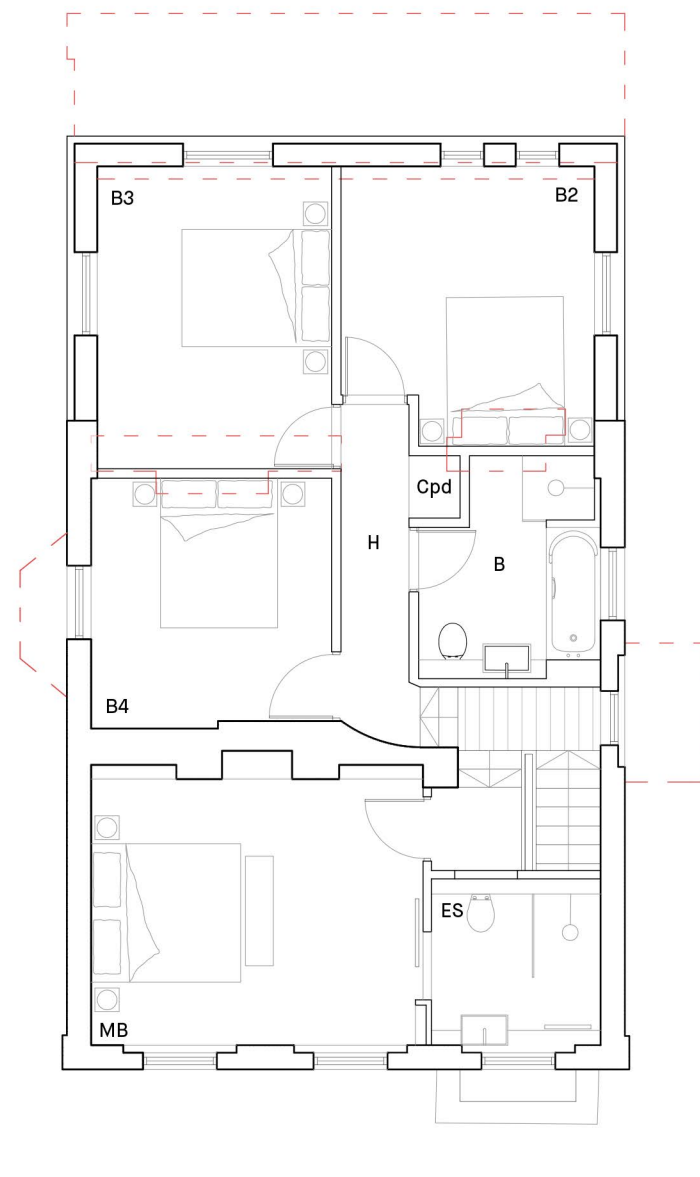
- B Bathroom
- MB Master Bedroom
- B2 Bedroom 2
- B3 Bedroom 3
- B4 Bedroom 4
- D Dining
- E Entrance
- ES Ensuite
- K Kitchen
- L Living Room
- U Utility
- WC WC

Material Key

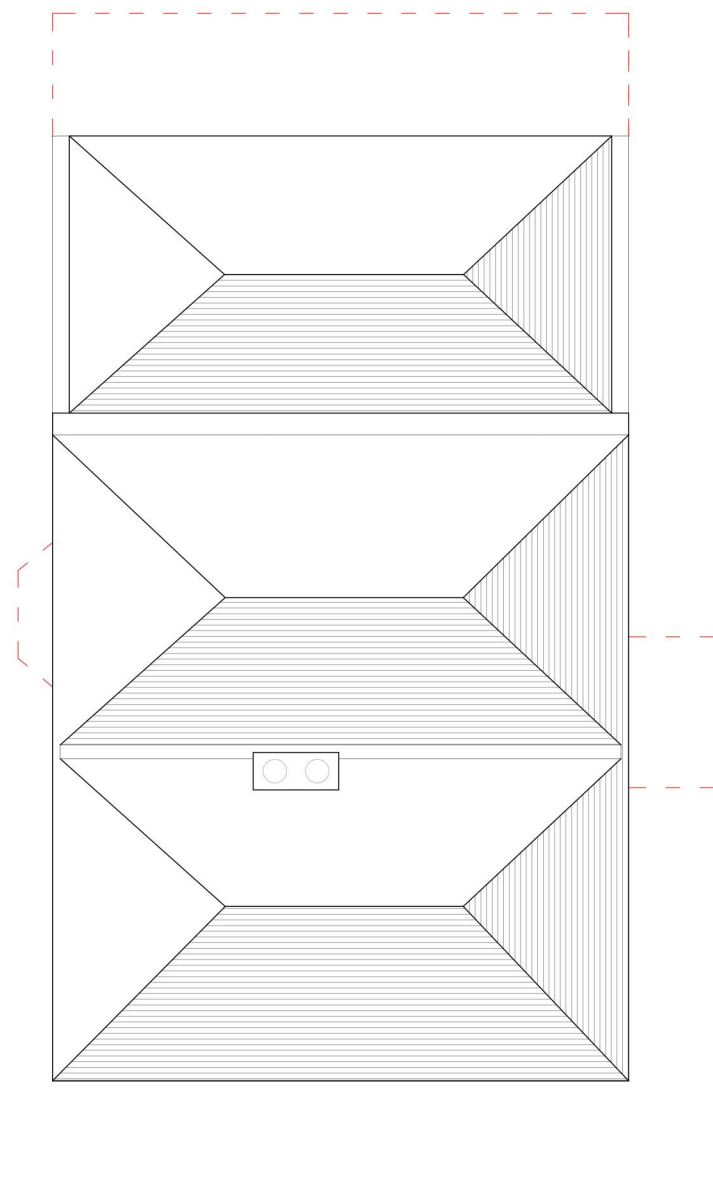
- 1 Buff Brick to match existing Heritage Asset
- 2 Slate Tile to match existing Heritage Asset
- 3 Hardwood Painted Timber window w/ painted stone detail to match existing Heritage Asset
- 4 Hardwood Painted Timber door w/ painted stone detail to match existing Heritage Asset
- 5 Hardwood Painted Timber window
- 6 Hardwood Painted Timber door



Proposed Ground Floor Plan



Proposed First Floor Plan



Proposed Roof Plan

REV	DATE	DESCRIPTION
A	21.02.20	Scale bar and labels amended
B	28.07.20	Revision to house type 1, reverted back to the original house
C	12.07.21	Material Key Added



PROJECT:  
1902\_TSJT  
Residential Development at the site  
Rose Hill, The Street, Ash

DRAWING TITLE:  
Proposed House Types  
Unit 1

SCALE: 1:100 @ A1  
DATE DRAWN: October 2019  
DRAWN BY: O3  
CHECKED BY:

STATUS:  
PLANNING

DRAWING NUMBER: 1902\_110  
REVISION: C